

Din Locks 72mm Centres



KEY FEATURES:

- 72mm centres
- 55mm or 60mm Backset
- Square or Radius Faceplate options
- Easily reversible latch
- Follower is suitable for 8mm square spindle.
- Double throw deadbolt
- Adjustable keep
- Stainless steel strike plate and face plate
- Available with bolt through provision for 38 mm bolt through centre.
- Tested for 200,000 Cycles & Dead Bolt for 50,000 Cycles.
- Operation: Deadbolt operated by Euro Profile Cylinders.

SKU	Type	Size	Faceplate	Finish	Package Type	Qty
LL1510	Escape	72mm/60mm	Square	Satin Stainless Steel	Trade Packed	1
LL1511	Sashlock	72mm/55mm	Square	Satin Stainless Steel	Trade Packed	1
LL1512	Deadlock	72mm/55mm	Square	Satin Stainless Steel	Trade Packed	1
LL1513	Sashlock	72mm/55mm	Radius	Satin Stainless Steel	Trade Packed	1
LL1514	Deadlock	72mm/55mm	Radius	Satin Stainless Steel	Trade Packed	1

BS EN 12209:2016



Euro Cylinder

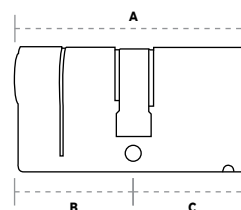


SPARKA 5 pin semi-restricted double cylinder. Comes complete with 3 keys.

SKU	Size A	Size B	Size C	Finish	Package Type	Qty
LL1313.MAS	70mm	35mm	35mm	Matt Satin	Retail Bag	1

MORE CYLINDER SIZES AVAILABLE AND MASTER KEY SUITES

TECHNICAL



BS EN 1303:2005

KEY FEATURES:

- Anti-Snap
- Anti-Pick
- Anti-Drill

Euro Cylinder & Turn

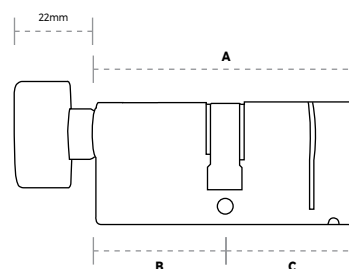


SPARKA 5 pin semi-restricted euro cylinder and turn. Comes complete with 3 keys.

SKU	Size A	Size B	Size C	Finish	Package Type	Qty
LL1312.MAS	70mm	35mm	35mm	Matt Satin	Retail Bag	1
LL1317.MAS	80mm	40mm	40mm	Matt Satin	Trade Packed	1

MORE CYLINDER SIZES AVAILABLE AND MASTER KEY SUITES

TECHNICAL



BS EN 1303:2005

KEY FEATURES:

- Anti-Snap
- Anti-Pick
- Anti-Drill